



AMERICAN DUCTILE IRON PIPE

AMERICAN Ductile Iron Specials
AMERICAN Fastite Joint Push-Bar Pipe

ANSI/AWWA C151/A21.51 and AMERICAN Standard

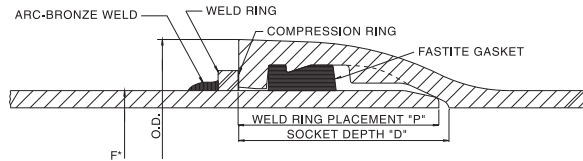
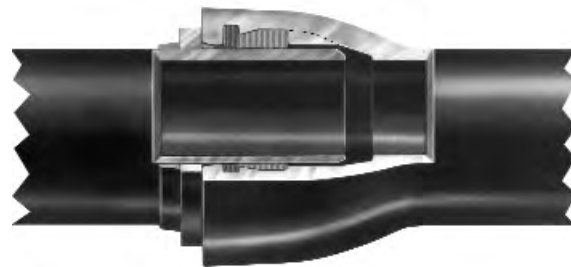


Table No. 7-22

Pipe Size in.	Standard Nominal Laying Length	Pipe O.D. in.	F* Bell O.D. in.	Weld Ring Size	P in.	D in.	Rated Push** (lb. x 1000)
4	18	4.80	6.71	1/2" sq.	3.13	3.31	54
6	20	6.90	8.90	1/2" sq.	3.25	3.38	78
8	20	9.05	11.16	1/2" sq.	3.63	3.75	102
10	20	11.10	13.25	1/2" sq.	3.63	3.75	125
12	20	13.20	15.37	1/2" sq.	3.63	3.75	150
14	20	15.30	17.73	1/2" sq.	5.00	5.23	260
16	20	17.40	19.86	1/2" sq.	5.00	5.23	296
18	20	19.50	22.16	1/2" sq.	5.38	5.50	312
20	20	21.60	24.28	1/2" sq.	5.38	5.50	345
24	20	25.80	28.50	1/2" sq.	5.38	5.50	413
30	20	32.00	34.95	5/8" sq.	6.38	6.50	545
36	20	38.30	41.37	5/8" sq.	6.38	6.50	650
42	20	44.50	48.27	3/4" x 1 1/4" rect.	7.38	7.50	818
48	20	50.80	54.71	3/4" x 1 1/4" rect.	7.88	8.00	934
54	20	57.56	61.65	3/4" x 1 1/4" rect.	8.38	8.50	1,058
60	20	61.61	65.80	3/4" x 1 1/4" rect.	8.62	8.75	1,132
64	20	65.67	70.04	3/4" x 1 1/4" rect.	8.88	9.00	1,206

* Dimensions subject to change at our option. Check AMERICAN if exact dimensions required.

**Allowable axial compression loads for the Fastite Push-Bar Joint in straight alignment. Check AMERICAN if higher pushing loads are required.

See Section 3 for pipe classes and pressure ratings.